

Water supply and wastewater treatment solutions  
Europe

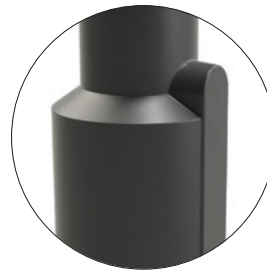
# Klargester PSD1 compact pumping station

Water and sewage pumping station  
with Water and wastewater pumping  
station with adjustable telescopic regulator.



Flexible pumping station for household use equipped with a regulator to adjust total height in range of 2070-2470 mm. The tank is made of rotationally moulded polyethylene for a monolithic structure and can be installed in difficult land and water conditions.

The PSD1 pumping station can be equipped with automatic Pedrollo TOP 2 VORTEX, FAMILY, and VXm greywater, rainwater, and wastewater pumps.



## PSD1 pumping station features:

- System regulator
- Tank neck can be cut to size
- Pitless Adapter
- Aesthetic padlocked A15-class hatch
- Renowned Pedrollo pumps
- Check valve
- Piping

The tank is flattened to make it easier to connect the supply pipe at the place of installation. The height can be changed in range of 500-775 mm.

The complete PSD1 pumping stations are equipped with a Swedish quick coupling ensuring fast and tight pump connection and making it easier to remove the pump during inspections and maintenance.

### PSD1 campus – technical data

Diameter	600 mm	
Height	2070 - 2470 mm	The height can be reduced to 1300 mm with the telescopic regulator and by cutting the tank down to size*
Drain	G32 thread	CC 950 mm
Supply	Ø110/160 mm rubber washer	VG 500 - 775 mm
Cable gland	Ø50 rubber washer	
		Delivered without openings
		Delivered without openings

\* If you want to cut to size, please see the installation manual.

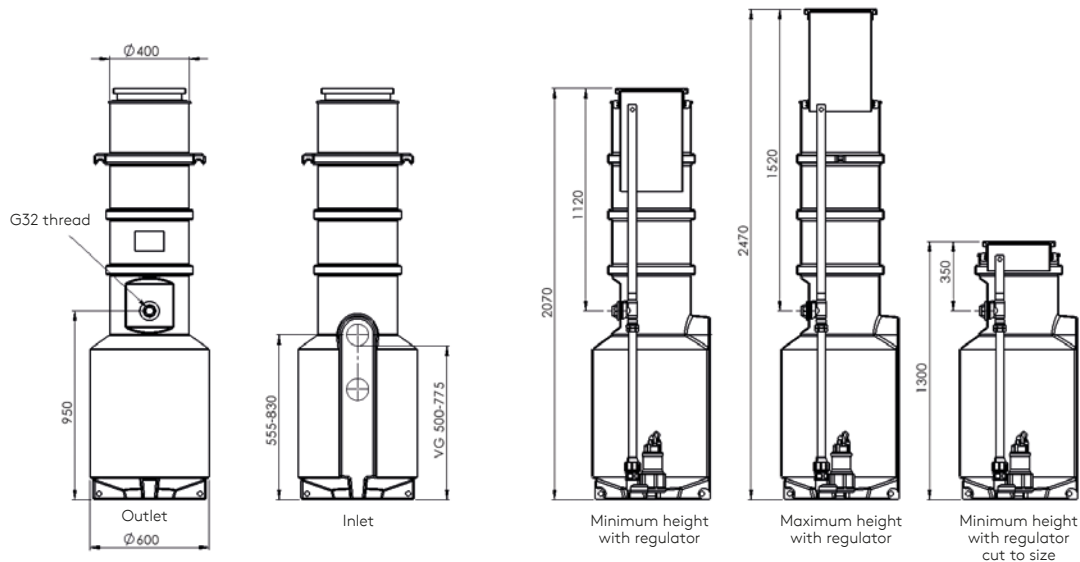
Pump model	Symbol	Product code	Pump	Application
PEDROLLO TOP 2 VORTEX	1062258	PC1 CEE G/R	PMP-ST-CGR-ROK	Greywater and rainwater
PEDROLLO FAMILY	1062071	PC1 CEE ROK	PMP-ST-CEE-ROK	Wastewater
PEDROLLO VXm	1062519	PC1 CEE SEWAGE	PMP-ST-CEE-SEW-ROK	Wastewater

kingspan.com

**Kingspan**®

# PSD1 pumping station

## Dimensions

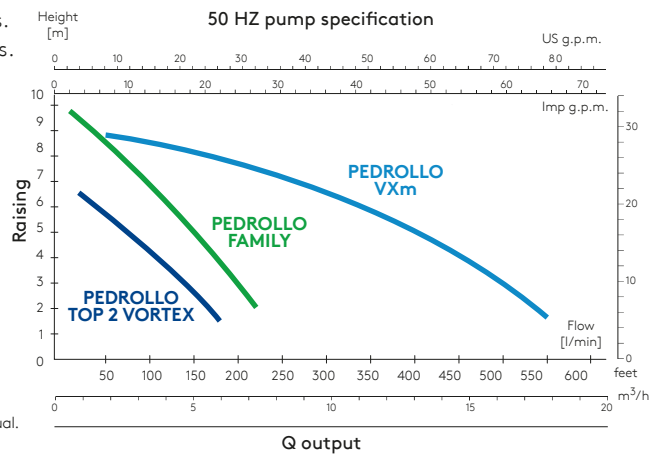


## Pedrollo pumps

For pumping contaminated water containing solid particles. The pumps are equipped with 25/30/50 mm free flow rotors. Pump output capacity: 170/220/550 l/min.



For details, please see the pump documentation and pumping station installation manual.



## Optional accessories

Type	Symbol	Product code	Specification
BLS-N	563 26 73	1044928	Alarm cabinet with lamp and sound signal, including level switch.
HNL 1	-	1059495	High level alarm with lamp and modem to notify by text, e-mail, or application. Includes level switch.

Do you have any questions about the Klargestor PSD1 pumping station?  
Our sales team is waiting for you!

European Office  
Kingspan Water & Energy sp. z o.o.  
5 Topolowa St., 62-090 Rokietnica  
Poland  
T: +48 61 660 94 71  
E: woda@kingspan.com



We take every care to ensure that the information in this document is accurate at the point of publication. Specification may vary (within a small parameter) due to manufacturing process variations or environmental conditions. All images are for illustration purposes only and should not be taken as binding. The actual product may vary, and specification/ dimensions/ colour/ other attributes may differ. To ensure you are viewing the most recent and accurate product information, please visit [kingspan.com](http://kingspan.com).

©Kingspan and the Lion Device are Registered Trademarks of the Kingspan Group. All rights reserved.

The company is registered in South Ireland under the number NI017631. Registered address: 180 Gifford Road, Portadown, Co. Armagh, BT63 5LF, Northern Ireland. VAT GB412 5124 03 European office: Kingspan Water & Energy sp. z o.o., ul. Topolowa 5, 62-090 Rokietnica, Poland. TIN/VAT PL779 20 57260.

v1.01.2025

